

Basic Information

Introduction

EasyConf is the **main** application within de MVI Software Suite. It takes care of the meeting **preparation, management** and gathering **metadata** of the meetings for **reporting**. EasyConf handles the communication with the conference systems, camera's, MVI adapters, API and outputs the metadata.

By default EasyConf is started in the background and by double clicking the yellow icon in the systemtray it can be opened. Alternatively it can be opened by right-clicked the icon in the **system tray** and choose open EasyConf.

Since there are many different settings in EasyConf, the chapter is quite long and extensive but we will try to cover all the features in settings in more detail.

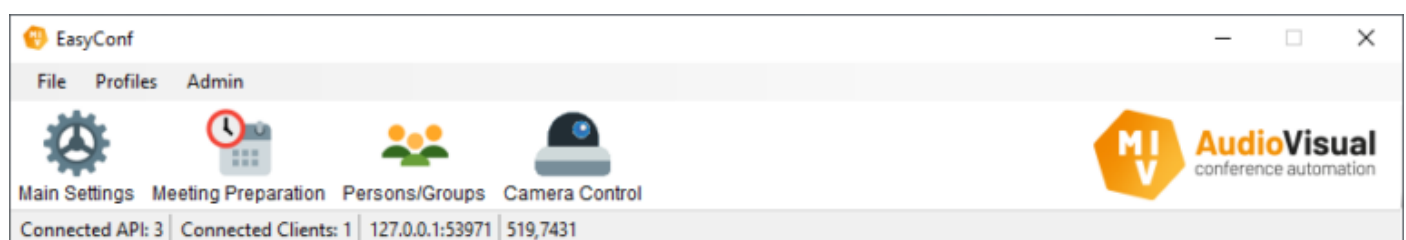
Conference Systems

When setting up and using EasyConf, you will see that there is a different approach to handling various conference systems. An easy rule to remember is that Bosch, which was the original maker of choice, is handled slightly different from all the other ones. Also because the API of Bosch is more extensive than others.

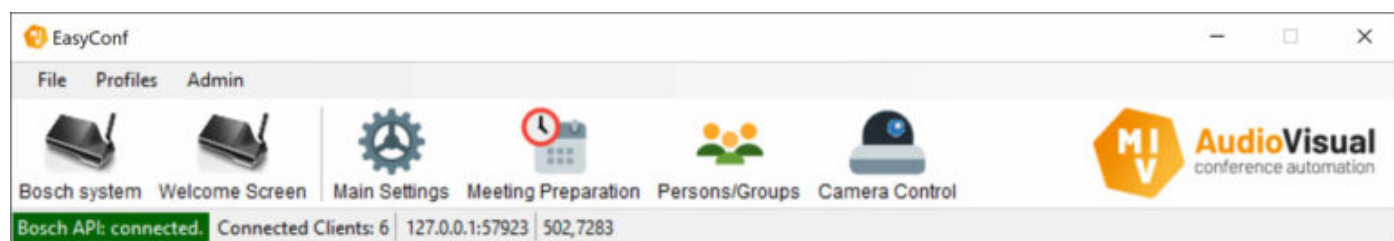
- **Bosch:** Built-in support and added menu structure for controlling MMDs and more
- **Others:** Support via an external connector executable we call an **adapter**

User Interface

The main user interface of EasyConf consists of a Windows standard application layout. Here you can find all the settings and parameters you need to adjust to tailor the system behaviour to your needs.



Please be aware that the available icons and **menus might change depending on the selected conference system**. Not only the main bar you will see here but also the individual submenus in the Admin section can be affected by the different conference system and also activated EasyConf features.



If you quickly want to find out which **version** of EasyConf you are running, a single click on the MVI logo on the right will open a popup with the relevant information about version and build. For support questions we will always need this information.